

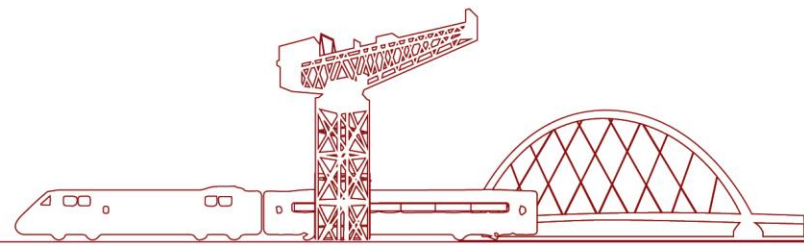
Flourishing in our future climate: Building just and inclusive resilience in the face of climate change



Public Health Information Network for Scotland
Seminar 21 October 2021

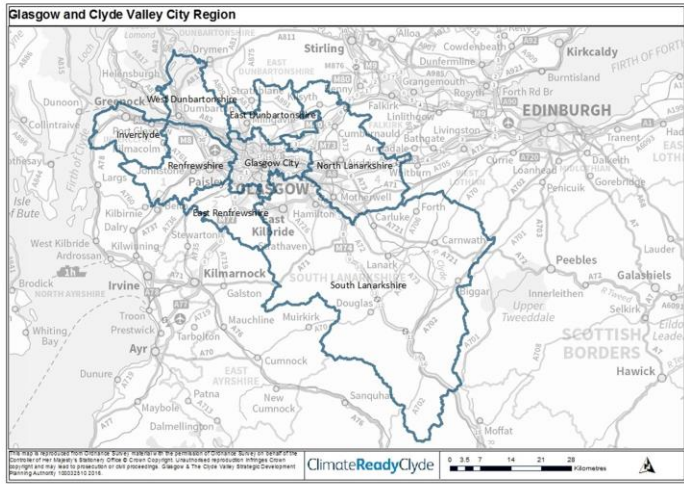


Climate Ready Clyde



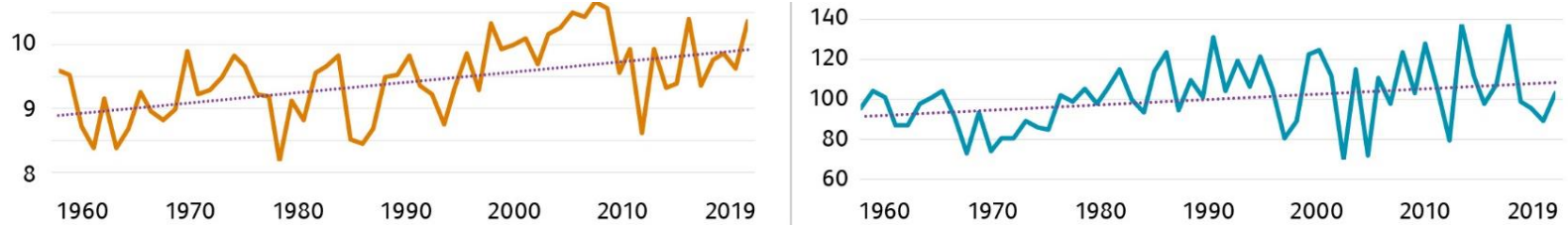
Climate Ready Clyde is a cross-sector initiative, funded by 15 partners and delivered by sustainability charity, Sniffer.

ClimateReadyClyde



Credit: University of Glasgow

Observations show Glasgow City Region's temperatures and rainfall are increasing



In all scenarios, climate change means Glasgow City Region will experience:



Increasing extreme weather



Heavier winter rainfall and reduced summer rainfall



Higher average temperatures, with more frequent and extreme heatwaves

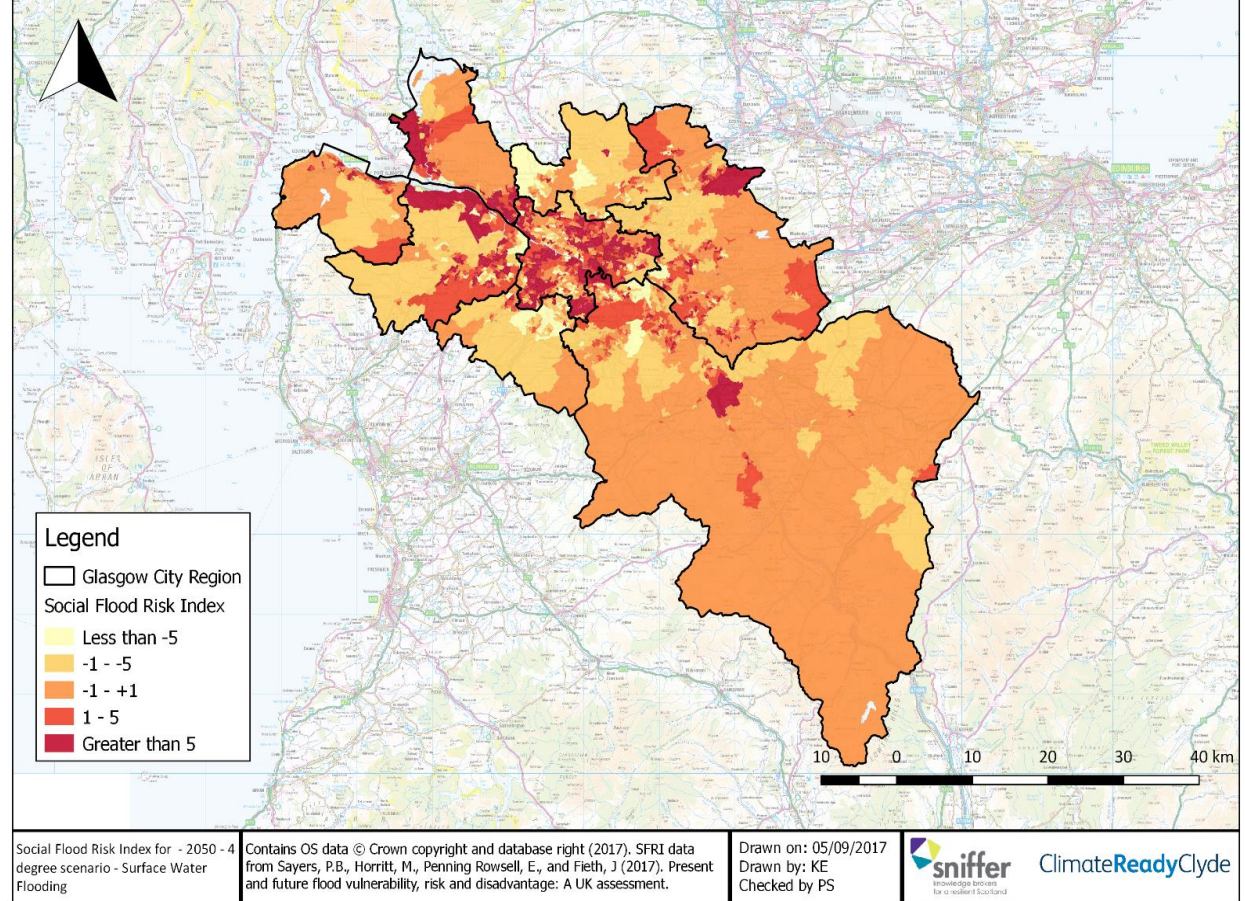


Sea level rise and coastal erosion

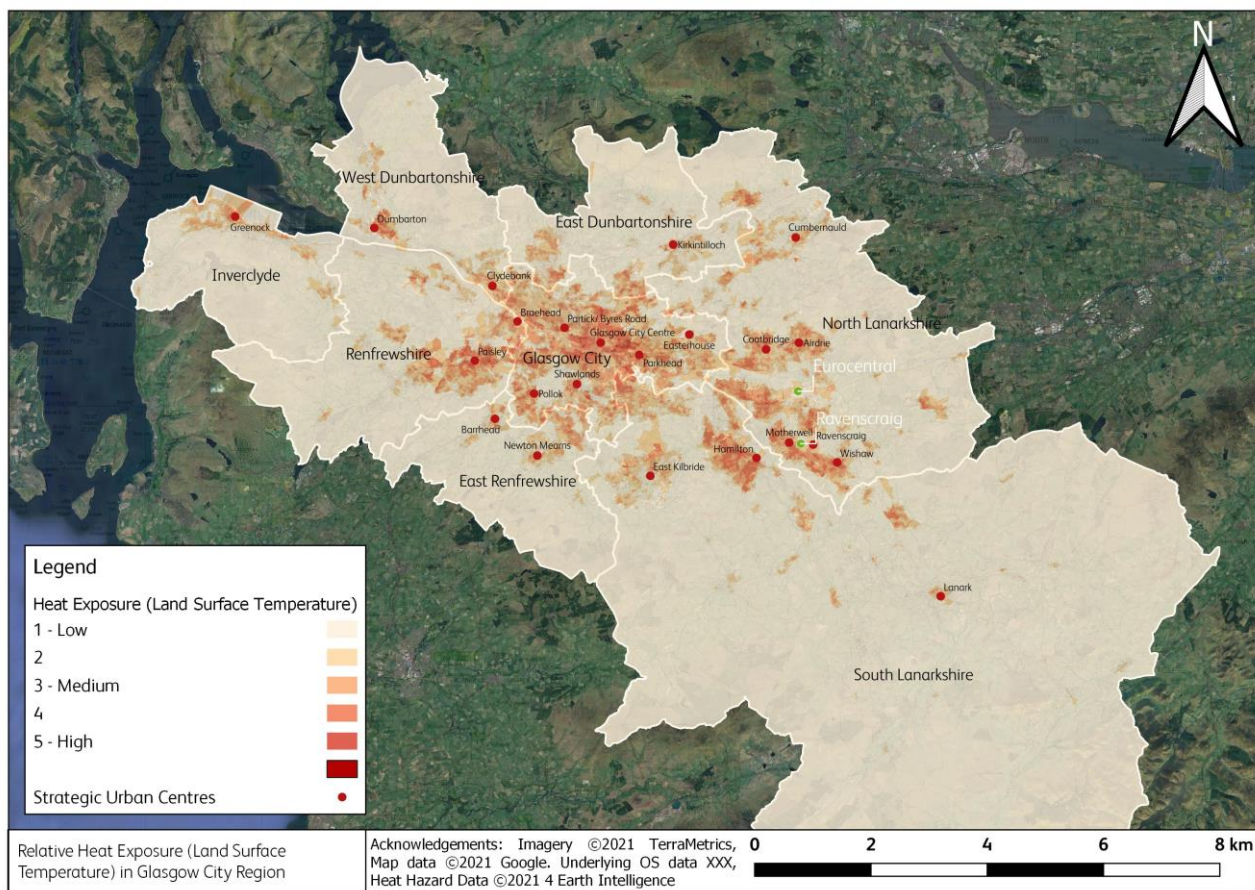


Increased likelihood of flooding

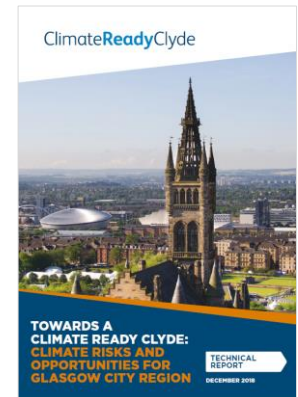
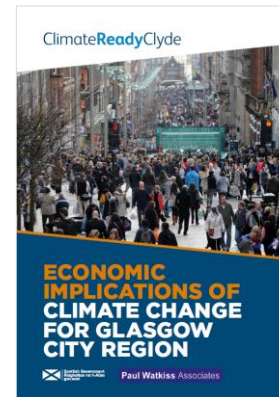
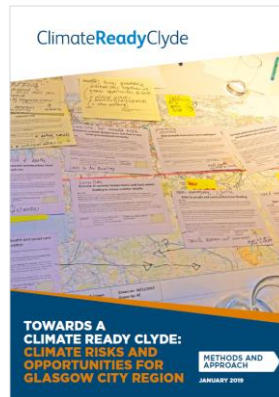
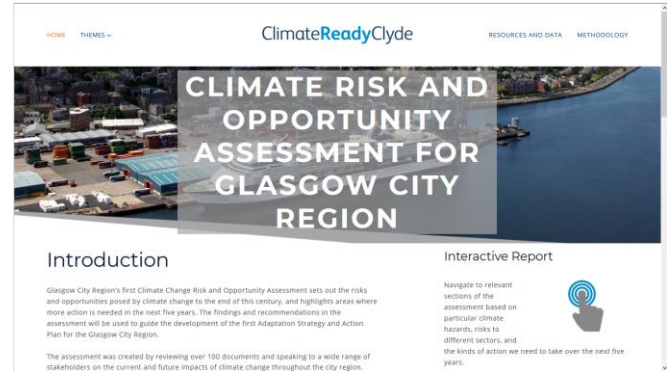
Intersection of future flood exposure (surface water flooding) and social vulnerability in 2050, 4°C scenario



Relative heat exposure (land surface temperature) in Glasgow City Region



Climate Risks and Opportunities for Glasgow City Region



Glasgow City Region's risks and opportunities: 10 priority areas



IN3: Risks to infrastructure services from coastal flooding and erosion

IN7: Risks to energy, transport and ICT infrastructure from storms and high waves

IN8: Risks to energy, transport and ICT infrastructure from extreme heat

SH5: Risks to NHS estates due to flooding and overheating

NE1: Risks to soil stock from changes in temperature and water regime

NE5: Risks to crops and livestock from extremes in temperature and water regime

NE17: Risks to freshwater biodiversity from pests, invasive species and disease

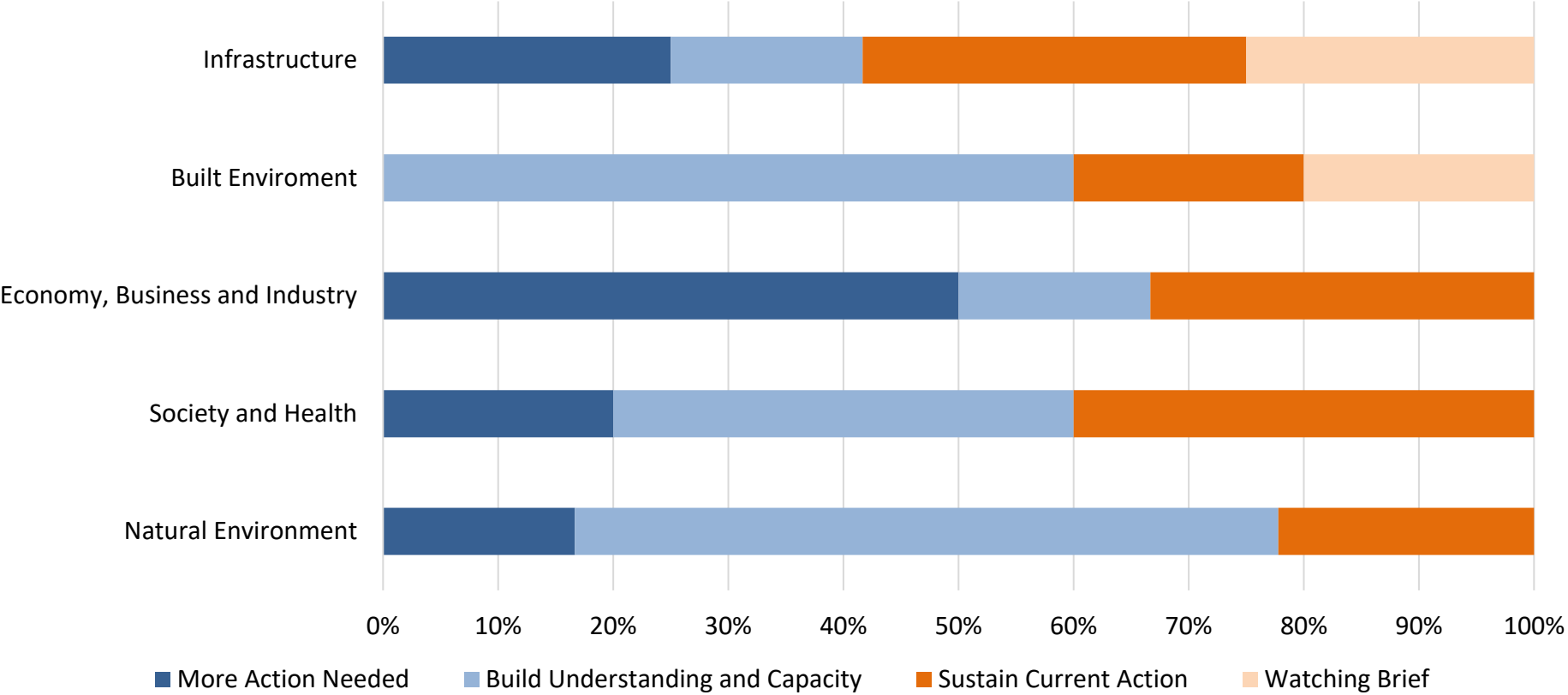
BI1: Risks to new and existing business sites from river, surface water and coastal flooding

BI4: Risks to business from disruption to supply chains and distribution networks

BI5: Opportunities for products and services to support adaptation



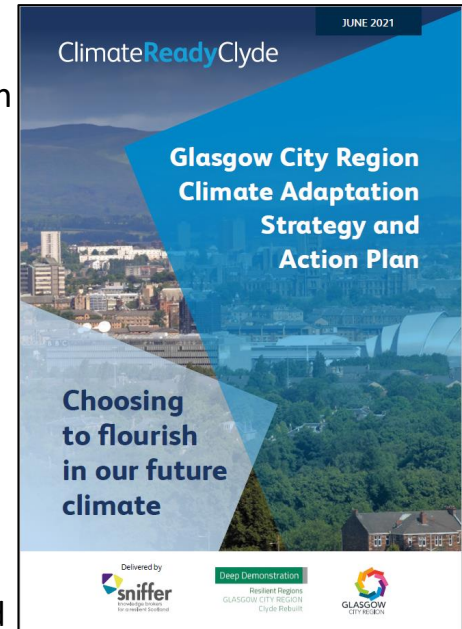
Climate Risk and Opportunity scores by category



Glasgow City Region Climate Adaptation Strategy and Action Plan - Overview



- High ambition – A best in class in Europe, and worthy of a city region hosting COP26.
- Will systematically transform our economy, society and natural environment to one which flourishes in a future climate within a decade.
- Aimed at real transformation – with the region looking and feeling very different.
- Contains hard choices now, but means we avoid harder ones in future.
- Requires a step change and a new approach:
 - **Systems focused** – addressing the structural changes required
 - **Inclusive** – community/locality led, private sector contributing
 - **Collaborative** – with dynamic partnerships and new actors focused on collective outcomes
 - **Innovative and transformative** – because true resilience requires changing our culture, finance and institutions
- It means:
 - New governance is required** – with changes for oversight, delivery, ownership and agency, and
 - New funding is required** – using public funds strategically, unlocking private sector investment.



What is transformational adaptation?

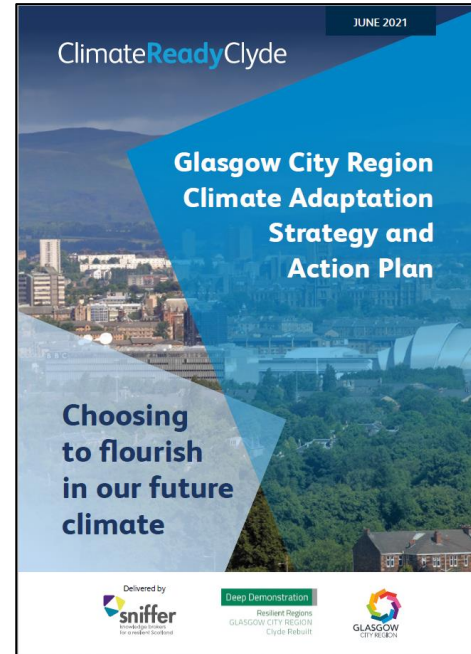


Involves changing existing approaches, altering governance arrangements, and addressing underlying causes of climate risk or vulnerability.

It may also involve re-thinking the future vision of the Region, including the societal, cultural, institutional, ecological and physical changes needed, as well as the region's political economy.

Transformational approaches call for systems thinking and socio-institutional analysis, and offer the potential to deliver a larger, more sustainable, permanent, long-term change.

(Source: Resilient Regions: Clyde Rebuilt, 2020)





Social Impact Assessment - to Support Just and Inclusive Adaptation

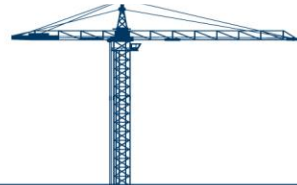


Intervention 4: Enable and equip **individuals and** communities to participate in adaptation, **focusing on the most vulnerable**

Aim: Increased desire of individuals and communities to shape their places so they are climate ready and an increase in resources for equipping them to do so, **effectively building cohesion and social capital between intersecting communities of interest and geography**. This should increase the pace and scale of community and local level action on adaptation.

What needs to happen :

- 4.1 A shared understanding of how current community engagement and empowerment activity is structured for adaptation**
- 4.2 Increased community involvement in the region's adaptation governance, decision- making, planning **and delivery**
- 4.3 Resources, training and education for communities and young people to shape their places
- 4.4 Collaborations between organizations, communities, artists and cultural practitioners to stimulate creative and relevant adaptation responses



Vision (to 2050)

A Glasgow City Region that flourishes in a future climate

3 Impact Areas
Outcomes
Guiding principles

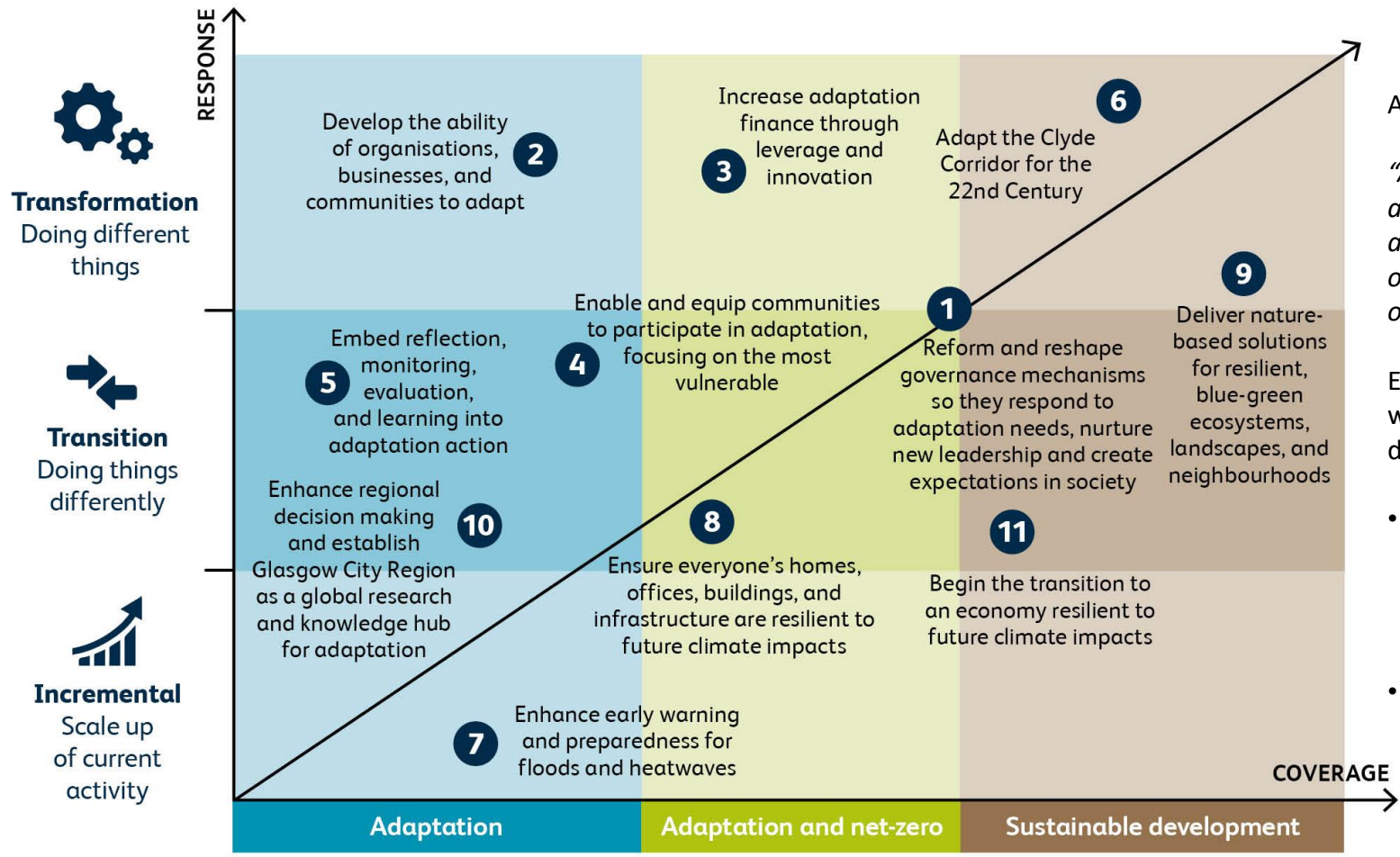
Strategy (to 2030)

11 Interventions
42 Sub Interventions

Action Plan (2021 – 2025)

**Broader City Region
contributions**

16 Flagship Actions



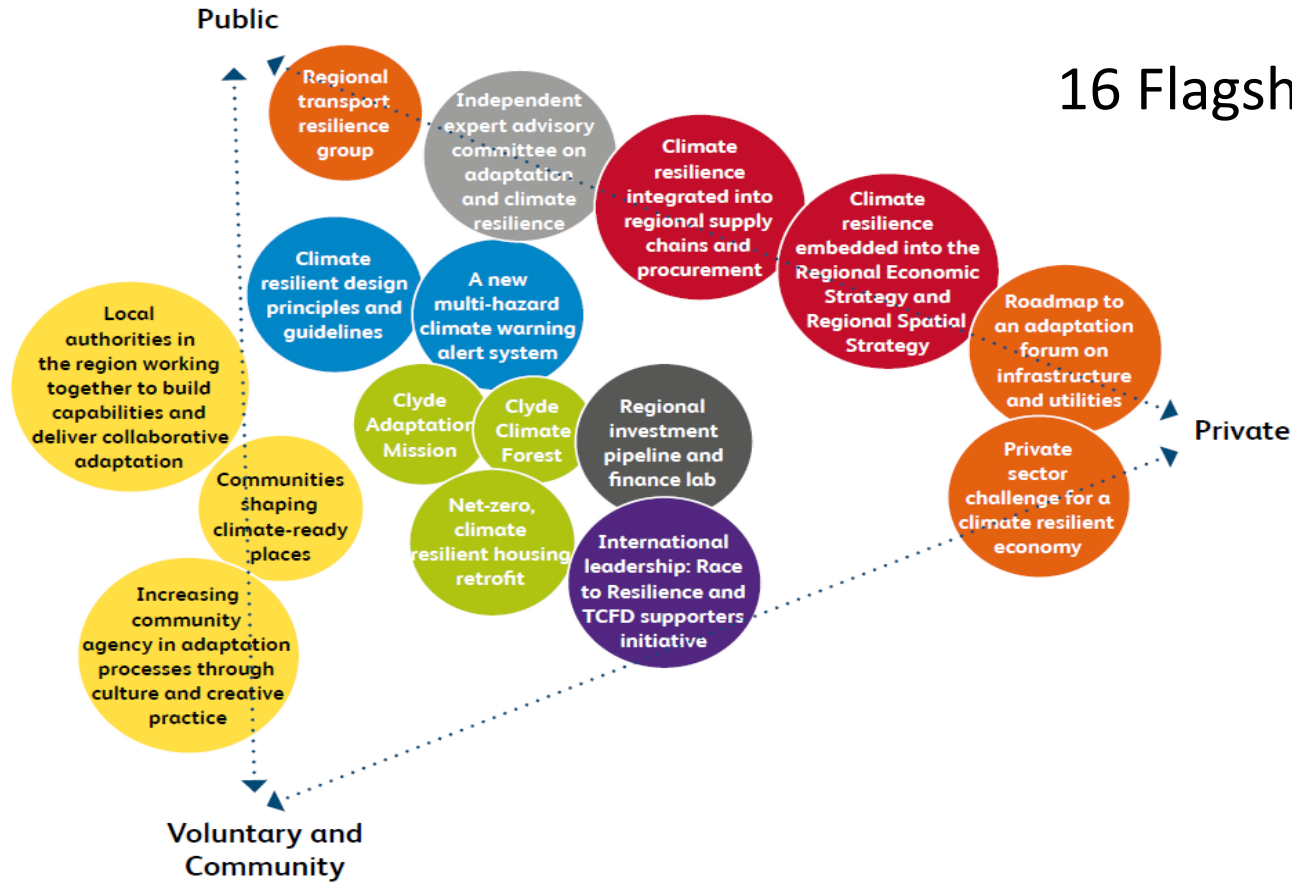
An intervention is:

“A strategic package of activities designed to achieve intermediate outcomes and contribute to our long-term outcomes.”

Each intervention sets out what has to happen, with differing:

- **Coverage** the x axis (from adaptation, through net zero, to broader economic/social change)
- **Response** the y axis (from scaling up what we already do, through transition, to doing different things).

16 Flagship Actions



- | | | |
|--|---|--|
| ● Tools & resources | ● Policy approaches | ● Finance |
| ● International leadership | ● Engagement | ● People |
| ● Knowledge | ● Physical interventions | |

Clyde Climate Forest



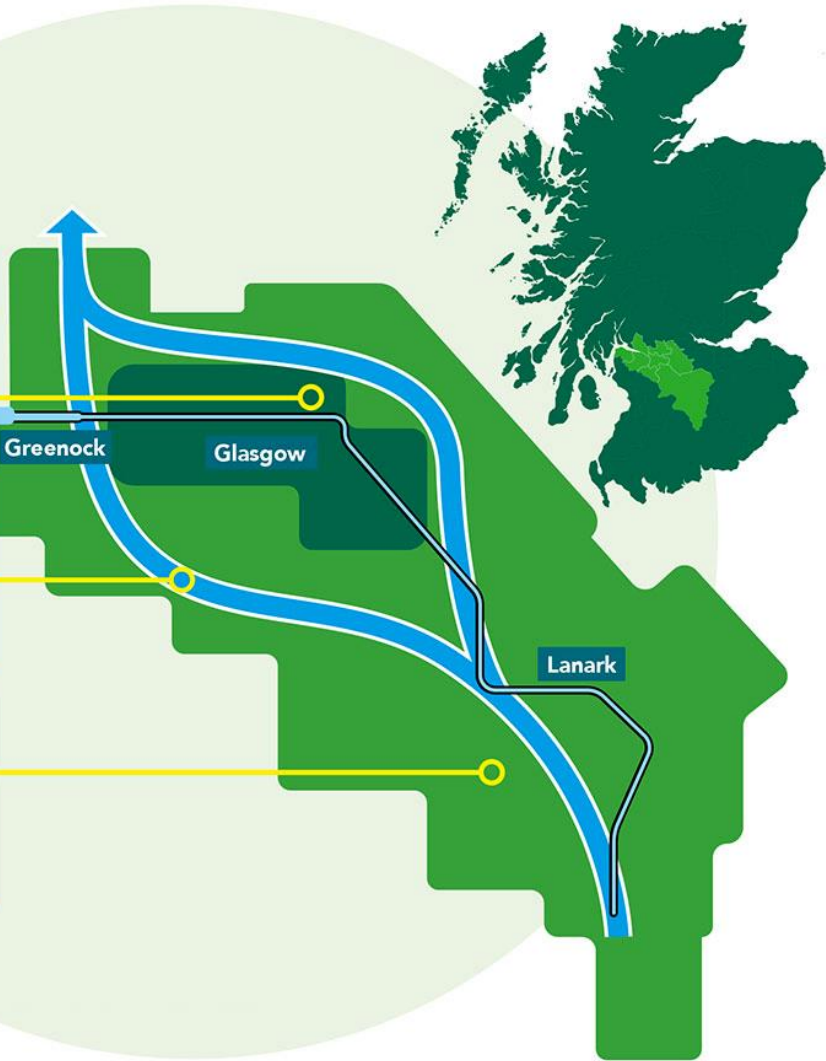
Canopy
Up to **1.5 million** new trees planted with local communities in urban areas.



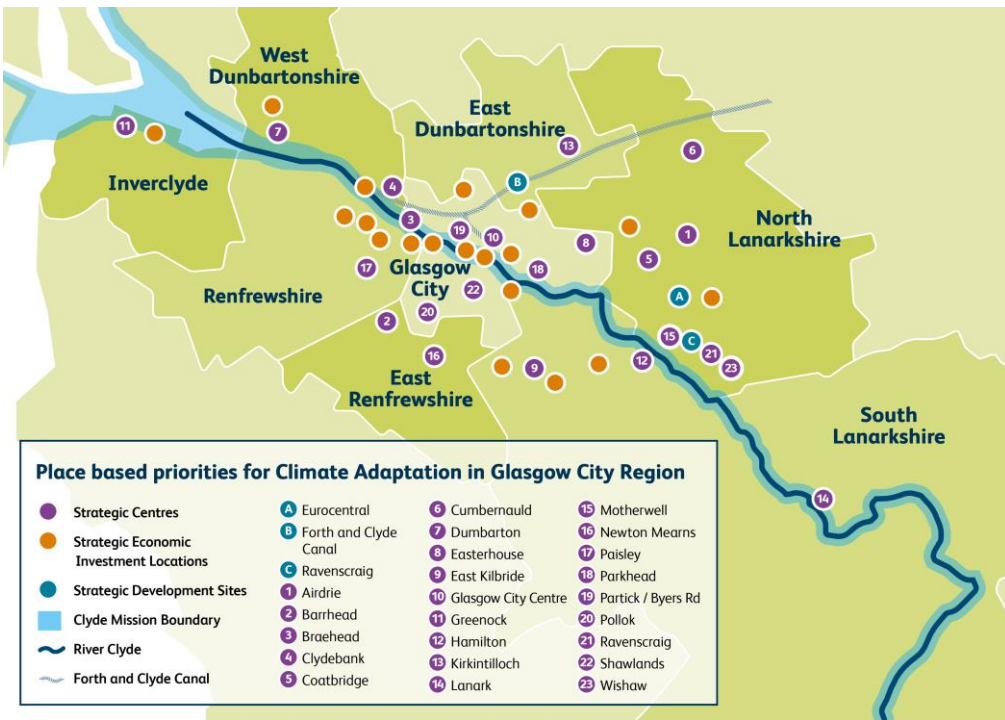
Connectivity
Targeting planting of **101** native woodlands creating a migratory route for wildlife.



Carbon
Up to **1,000 hectares** per year of new forests & woodlands planted across the region.



Place based priorities

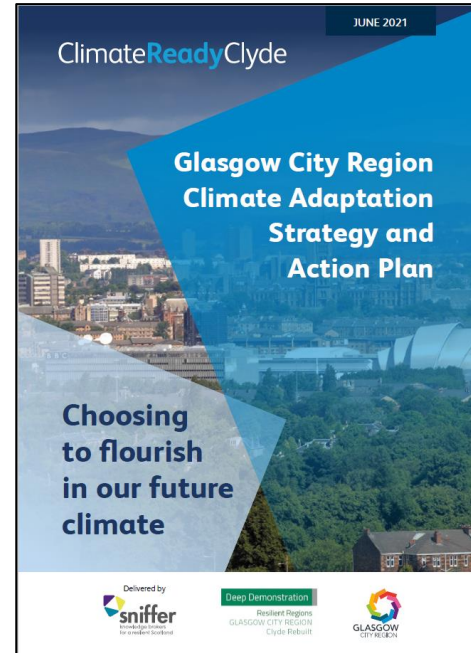


Area	Acute current / future hazards	Disproportionately vulnerable communities	Concentration of economic assets	Risk of 'lock in' - Significant new development
Clyde River Corridor	✓	✓	✓	✓
Strategic Development Sites			✓	✓
Strategic Economic Investment Locations			✓	✓
The coast	✓	✓		
Urban and town centres	✓	✓	✓	

A focus on achieving 'Just Resilience'



- Parallel concept to the Just Transition
- Strategy acknowledges social and economic inequalities created by climate impacts and people's varying ability to deal with them
- Recognises that social and economic factors, (e.g. gender, ethnicity, age, disabilities, income, housing tenure) affect how people are impacted by climate change
- Also involves economic considerations – promoting diversification to ensure workers in sectors and locations impacted by climate change can re-train
- Interventions seek to address this and ensure the benefits of region's adaptation are widely and equitably shared, and ensure adaptation itself doesn't increase vulnerability or exacerbate existing inequalities



Action Plan includes 3 'stretch targets'



By 2025 we will have:

- Increased the resilience of over 140,000 of the region's most vulnerable people to the impact of climate change. The target of supporting the most vulnerable is aligned to the UN's 'Race to Resilience' campaign, of which Climate Ready Clyde is a member, and which will build the resilience of 4 billion of the world's most vulnerable to the impacts of climate change
- Closed the region's adaptation finance gap of £184m a year
- Involved 125 new organisations, community groups and businesses supporting the City Region to adapt



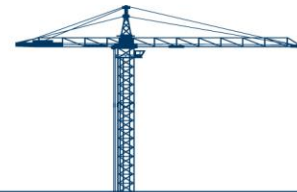
Increased the resilience of over **140,000** of the region's most vulnerable people to the impact of climate change



Closed the region's adaptation finance gap of **£184 m.** a year



Involved **125** new organizations, community groups and businesses supporting Glasgow City Region to adapt



Delivery through support from CRC to:



1. Foster an ambitious, adaptive culture, celebrating and monitoring progress
2. Coordinate and activate institutions, communities and business
3. Drive and deliver innovation
4. Enable and equip action





Catherine Pearce

Innovation Manager

Catherine@sniffer.org.uk

<http://climatereadyclyde.org.uk/adaptation-strategy-and-action-plan/>

